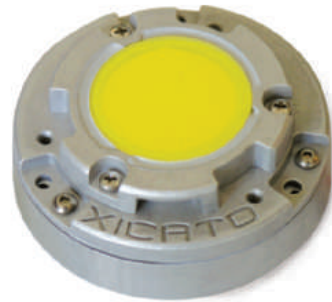
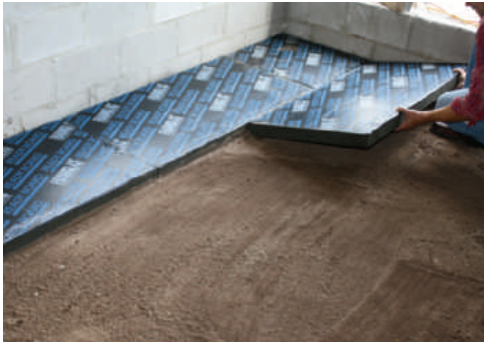


## productreports &gt; TOP 10 GREEN PRODUCTS



This year's group includes the most exciting products drawn from recent additions to the *GreenSpec Directory* and coverage in *Environmental Building News*, both published by BuildingGreen.

**FoamGlas**

Pittsburgh Corning [foamglasinsulation.com](http://foamglasinsulation.com)

This cellular glass insulation (top) is 100% glass, made from silica sand, limestone, soda, and trace minerals. Production is free of harmful blowing agents, and the material's high compressive strength and resistance to water and water vapor make it an appropriate substitute for extruded polystyrene. It is non-combustible and termite-resistant.

**CIRCLE 210**

**Xicato Spot Module**

Xicato, Inc. [xicato.com](http://xicato.com)

The Xicato Spot Module (top) is an LED module that is coupled with a separate heat sink, reflector, and remote driver. Designed for use in place of MR16 halogen lamps, the Xicato module is available with outputs of 400, 700, and 1,000 lumens in 2700K, 3000K, and 4000K color temperatures. Xicato's coating absorbs the off-color light emitted from the LEDs and reemits a consistent, color-corrected light. **CIRCLE 212**

**Low-Smoke Zero-Halogen EZ-Wiring & EZ-Cabling Systems**

Electec, Ltd. [electeconline.com](http://electeconline.com)

This cost-effective plug-and-play modular wiring system contains none of the halogens (bromine, chlorine, or fluorine) that are commonly used in cable sheathing, and no heavy metals. Rated as "low-smoke, zero-halogen," these systems are designed for easy reuse and reconfiguration using uniquely keyed connections. **CIRCLE 213**

**FSC Furniture**

Knoll, Inc. [knoll.com](http://knoll.com)

All of Knoll's standard furniture lines that incorporate wood now come with Forest Stewardship Council-certified wood. With just a few exceptions, effective December 2009, Knoll began providing FSC-certified wood without asking, at no surcharge, and at standard lead times.

**CIRCLE 211**

**OBPlus Wall System**

Bensonwood [bensonwood.com](http://bensonwood.com)

The OBPlus Wall system is framed using 9.5"-deep I-studs filled with R-35 dense-pack cellulose insulation, then clad with exterior moisture-resistant OSB sheathing. Advanced gasket technology is used for air sealing, detailing minimizes thermal bridging, a drainage plane is installed on the exterior, and integral baseboard raceways on the interior eliminate wall penetrations. **CIRCLE 214**