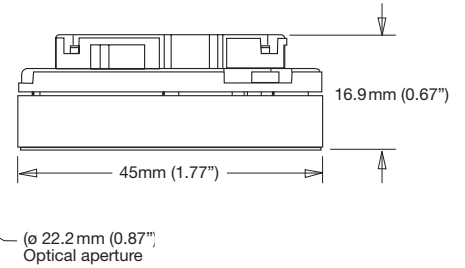
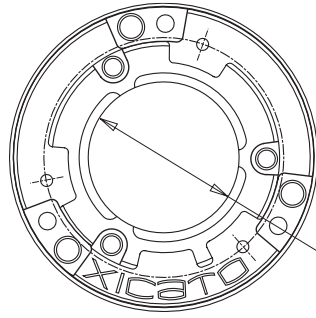
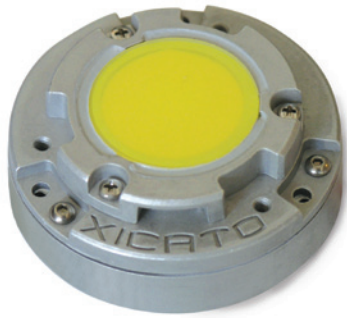


XSM Artist Series LED Module

Corrected Cold Phosphor Technology™



Specification Features

Physical Characteristics

Module Source Type: Corrected Cold Phosphor LED module.
 Dia. 45mm (1.77") x 16.9 mm (.67"). Optical Aperture Dia. 22.2mm (.87").
Maximum Case Temperature: 90°C
Phosphor Proximity: Remote.
Module Weight: 54gm (1.9oz) (100ct box weight 6kg (13.2lbs)).
Interfaces: Base dia. 45mm (1.77"). Provision for accessory reflector attachment. Integral wire harness 24 AWG, 40cm, UL105°C, 300V. Mounting screws M2 x 0.4 x 14mm. Thermal interface: eGraph HT-1205A.
Module Housing: Diecast aluminum construction with sealed glass aperture. IP66 rated.
Storage Temperature: -40°C to 85°C

Photometric Characteristics

Color Consistency: CCT +/- 50K, Duv +/- .001, 1x2 step MacAdam (1x2 SDCM) along BBL.
Color Rendering Index: Ra ≥ 95, R9 ≥ 90 (3500K, 4000K ≥ 85)
Color Rendering Index Consistency: +3/-0pts.
Module Life: Lumen maintenance L70/B50 50,000hrs.

Other

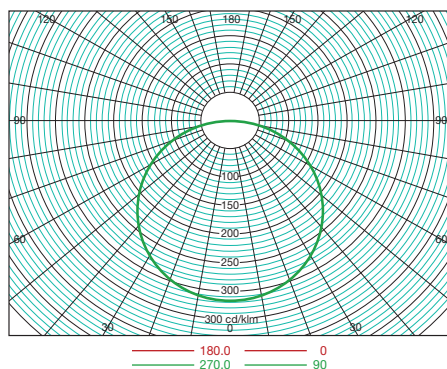
Regulatory: Modules UL recognized. RoHS compliant.
Mercury Content: No mercury.
UV or IR Content: None.

Ordering Guide*

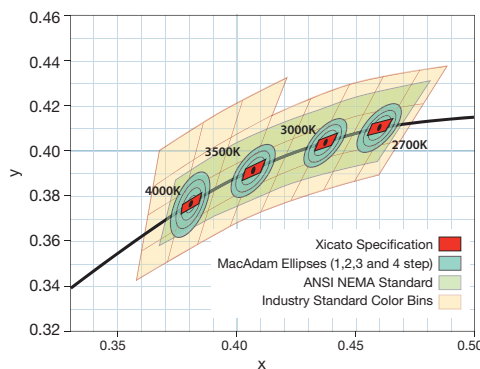
Luminous Flux	Part Number	Correlated Color Temperature
700 lm	XSM9527-700-B	2700K
	XSM9530-700-B	3000K
	XSM9540-700-B	4000K
1000 lm	XSM9527-1000-B	2700K
	XSM9530-1000-B	3000K
	XSM9535-1000-B	3500K
	XSM9540-1000-B	4000K

* For a complete list of luminaires incorporating Xicato LED Modules and information on compatible drivers, heatsinks and reflectors, go to www.xicato.com. For XSM 80 series, refer to XSM 80 Series Product Data Sheet.

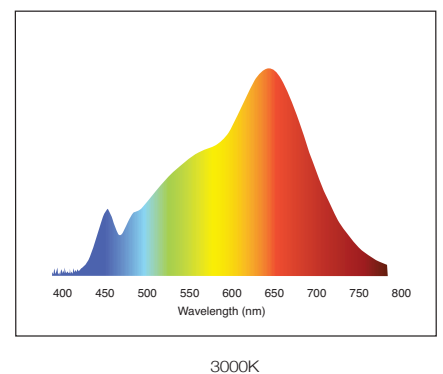
Photometric Performance



Color Consistency



Spectral Power Distribution



Color Rendering Index (Typical)

Ra	R1	R2	R3	R4	R5	R6	R7	R8	R9	R10	R11	R12	R13	R14	R15
98	98	99	98	98	98	97	98	98	98	99	98	88	98	98	98



Technical Data

Lighting ¹								Electrical (constant current)								
Module	Part Number	Correlated Color Temperature	Color Rendering Index ³	Color Consistency			Lumen Maintenance ⁴	Module	Drive Current ⁵	Forward Voltage ⁶			Power Consumption ⁷	Lumen Output ⁸ (Typical)	Efficacy (Typical)	Thermal Class ¹⁰
		(CCT) ²		SDCM	CCT	Duv	hrs			mA	Min	Typ				
700 lm	XSM9527-700-B	2700K	CRI Ra ≥ 95 R9 ≥ 90	≤1 x 2	± 40K	± 0.001	50k	700	18.1	20.7	23.0	14.5	700	48	F	
	XSM9530-700-B	3000K			± 50K				17.7	19.8	22.3	9.9	550	56	D	
	XSM9540-700-B	4000K			± 70K				350	17.1	19.1	21.8	6.7	400	60	C
1000 lm	XSM9527-1000-B	2700K	CRI Ra ≥ 95 R9 ≥ 90	≤1 x 2	± 40K	± 0.001	50k	700	27.8	31.6	35.9	22.1	1000	45	H	
	XSM9530-1000-B	3000K			± 50K				500	26.9	30.7	34.9	15.4	800	52	F
	XSM9535-1000-B	3500K			± 60K				350	26.2	30.0	34.2	10.5	580	55	D
	XSM9540-1000-B	4000K			± 70K											

Notes:

- All lighting data shown in the above table is taken at a recommended operating test point (Tc) temperature of 70°C and highest rated drive current.
- '3000K' and '3500K' CCT's are 2950K and 3420K, respectively. CCT data ANSI/NEMA compliant.
- 'Ra' is defined as the average of color rendering indices R1-R8, 3000K data shown.
- Lumen maintenance is 50k hours based on L70/B50 criteria.
- The module is designed for usage with a class 1 or class 2 constant current power supply with an output current up to 700mA. Current may vary ±10% without affecting lifetime performance.
- Voltage data based on 20°C to 90°C operating range. For operation outside this range, contact factory.
- Power consumption is stated as a typical value that is based on the typical range of forward voltage. Maximum and minimum power values can be calculated using the voltage range.
- Absolute range of lumen output is ±10% of typical value.
- Specifications subject to change without notice.
- Thermal compatibility classification: Contact Xicato for details.

Recommended LED Module Specification

Physical Characteristics: LED module shall be remote phosphor, nominal 45mm (1.77") diameter, and aluminum and glass construction. Module shall be sealed, meeting IP66 requirements. Module shall be field-servicable.

Performance: LED module shall have a CRI (Ra) ≥95, with an R9 value ≥85. CRI values shall be +3/-0 points initial. LED module color points shall be within 1 x 2 MacAdam Steps initial. Flux output shall be measured at a minimum of 70 °C (±5°C).

General Requirements: LED module shall be UL recognized, and RoHS compliant.

LED module shall be Xicato Module. # _____

Luminaire Thermal Validation Program and Warranty

The Xicato Luminaire Thermal Validation Program was developed to ensure that luminaires incorporating Xicato LED Modules perform properly and deliver quality light that meets customer requirements. Qualified luminaires carry limited 5 year warranty. For details on Xicato's Luminaire Thermal Validation Program and warranty, contact Xicato.

About Xicato

Xicato is passionate about light. Light has an emotional effect on people and a direct impact on business profitability. It ultimately influences everything in our lives. Xicato is a recognized leader in creating LED modules that provide superior aesthetics, economics and durability. Xicato aspires to be the trusted partner of the global lighting design community and luminaire manufacturers.

For an overview of our customers' luminaires visit www.xicato.com.

For the best in lighting design, Xicato recommends a qualified lighting designer from the Professional Lighting Design Association (PLDA) or the International Association of Lighting Designers (IALD).

