

Project: \_\_\_\_\_ Designer: \_\_\_\_\_ Fixture: \_\_\_\_\_

Xicato®

NEMA 1 Enclosure  
TRC-E-LPV203560

\*Power Supply sold separately

The **TRC-E-LPV203560** enclosure is designed to house the Mean Well **LPV-20, LPV-35, LPV-60** as well as the **LPC-20, LPC-35, LPC-60** power supply units. Our TRC enclosure has a black powder paint finish with an easily accessible cover that is removable. This indoor enclosure is ideal when a permanently installed power supply is required for your application and it meets NEMA 1 requirements.

**Compliance:** ETL listed to **UL STD 508A****TRC Part #:** TRC-E-LPV203560**Weight:** .80 lbs**Dimensions:** 7.7"W x 1.8"H x 4.9"W**Functional features:**

- Designed for contractor installation
- Rugged NEMA 1 steel enclosure
- Integral mounting holes with (4) .20" mounting holes for surface mounting
- (4) 1/2" NPT Knockouts
- Fits Mean Well **LPV-20, LPV-35, LPV-60** and **LPC-20, LPC-35, LPC-60** power supply units

Mean Well LPV-60 shown with Enclosure



Field modifications and installation must comply with all local and national codes as well as Xicato's installation methods, see [xicato.com](http://xicato.com) for more information. Manufacturer retains the right to change specification information at any time.

# Xicato®

NEMA 1 Enclosure  
TRC-E-LPV20356

\*Power Supply sold separately

### Warning

To avoid electric shock, do not energize any circuits before all internal and external electrical and mechanical clearances are checked to assure that all assembled equipment functions safely and properly.

### Important use notes

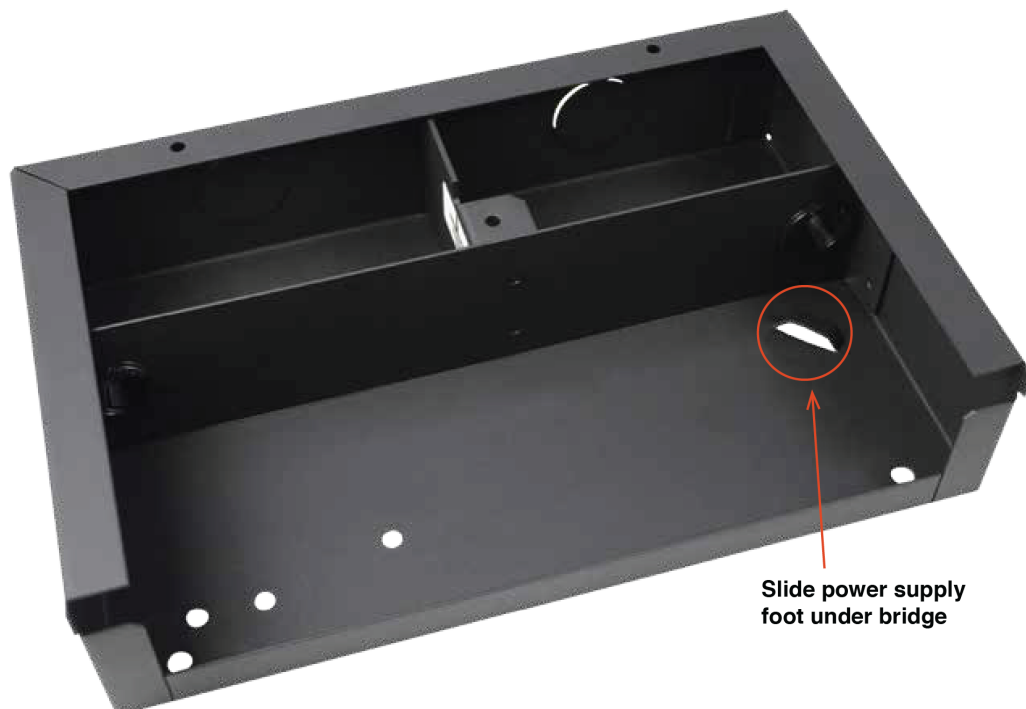
- This enclosure must be used with voltages below 600V
- This enclosure must be installed in accordance with the National Electrical Code, ANSI/NFPA 70, where the ambient temperature does not exceed 40°C (104°F) maximum
- This enclosure is for indoor use only

### Compliance information

This enclosure is ETL listed to **UL STD 508A**

### Installing Mean Well power supplies

This enclosure has been designed to house Mean Well **LPV-20, LPV-35, LPV-60** as well as **LPC-20, LPC-35, LPC-60** power supplies, and is provided with mounting hole positions to fit any of these power supplies. Install the required power supply using (1) provided 4-40 x 5/16 mounting screw with a 4-40 nut. Do not over tighten. It is recommended that this screw be secured with a workable thread lock compound such as Loctite 222MS or equivalent.

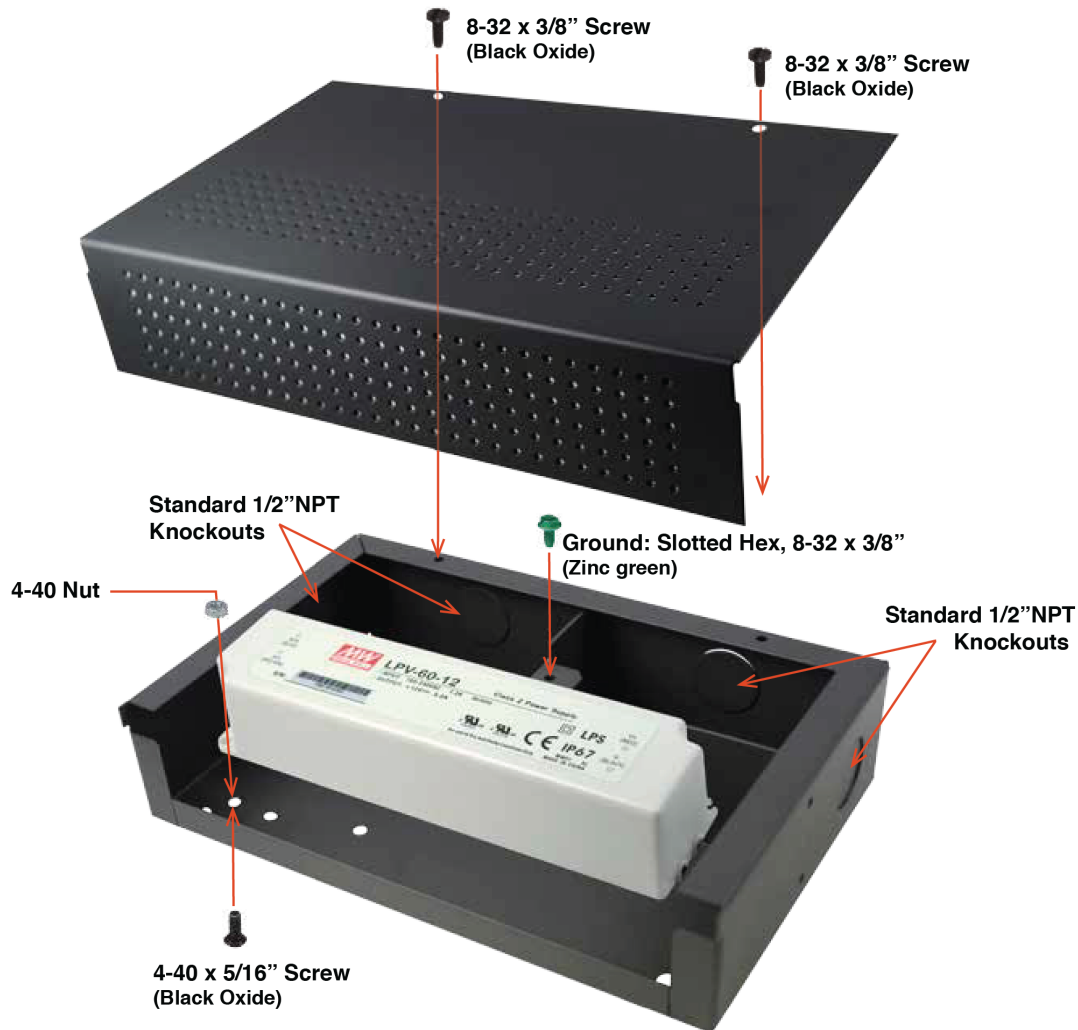


Slide power supply  
foot under bridge

Xicato®

NEMA 1 Enclosure  
TRC-E-LPV203560

\*Power Supply sold separately



### Mounting Instructions

0.20" mounting holes have been provided in the enclosure back box for convenient mounting of the enclosure using installer-provided #10 hardware.

Mount the enclosure in a suitable location that assures free airflow to and around the enclosure. Assure that the power supply and enclosure ventilation holes are not obstructed (shown above).

Standard 1/2" NPT Knockouts are provided for wire entry and exit.

### Grounding

This enclosure has been provided with one Slotted Hex Screw, 8-32 x 3/8" Zinc Green (see image) for ground.