

XICATO LED COOLING

For Xicato XOB Chip on Board LED light source - Off the shelf

Passive and active LED cooling

- Validated Thermal Designs
- Adaptable to your Needs
- Functional & Aesthetic

xicato[®]

MTx
MechaTronix

Mastering LED Cooling

With the evolution of LED lighting over the last years, the demand for professional thermal solutions has grown exponentially. And now that we no longer remain in the realm of low power LED's, thermal management becomes a critical factor within LED fixtures. To that end, MechaTronix has developed several series of pin-fin and star heat sinks, manufactured through die casting, forging or extrusion. This has resulted in a comprehensive range of more than 400 off-the-shelf available LED coolers, for passive or active heat dissipation.

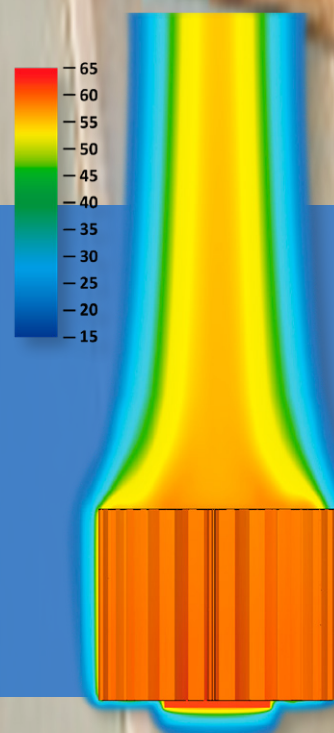
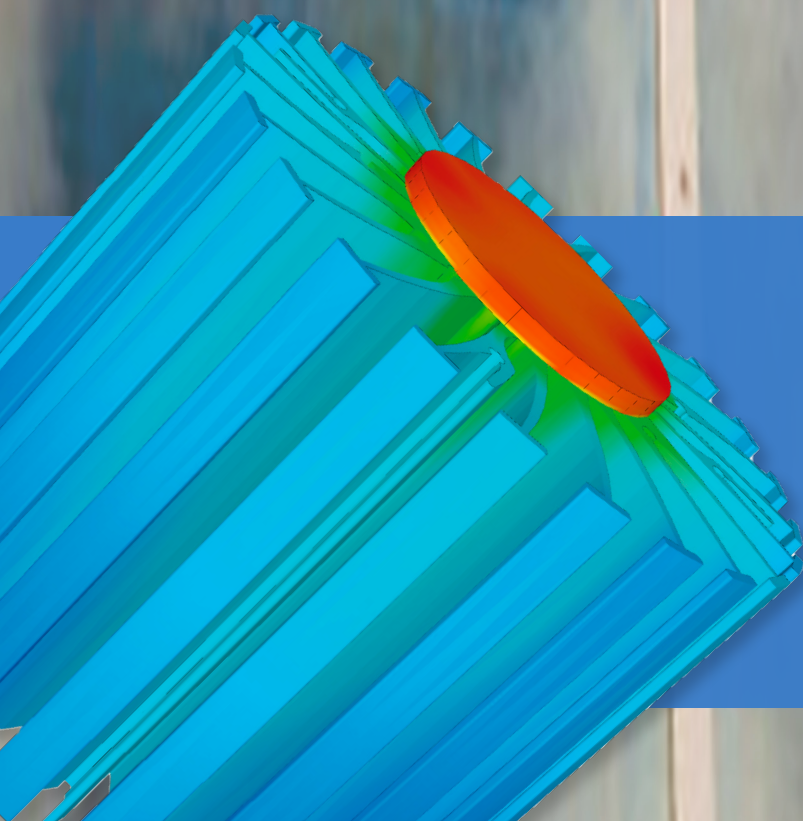
After initial reservations concerning active LED coolers, specialists have found that there really is no better option, when closing in on the 8000 lumen mark. Admittedly, the fan's lifespan becomes somewhat of a focal point in the application of an active LED cooler, but given that the lifespan of the LED engine itself dramatically decreases at high temperatures, the lifespan of the fan looks rather favourable all of a sudden.

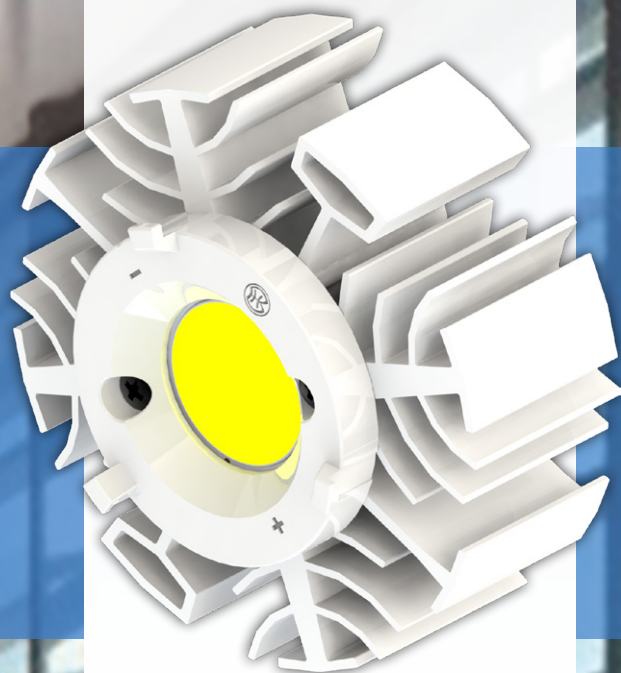
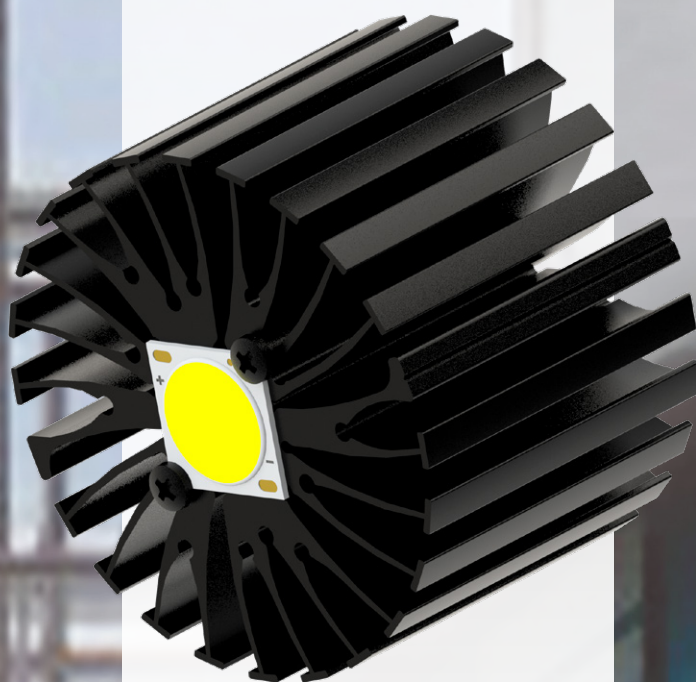
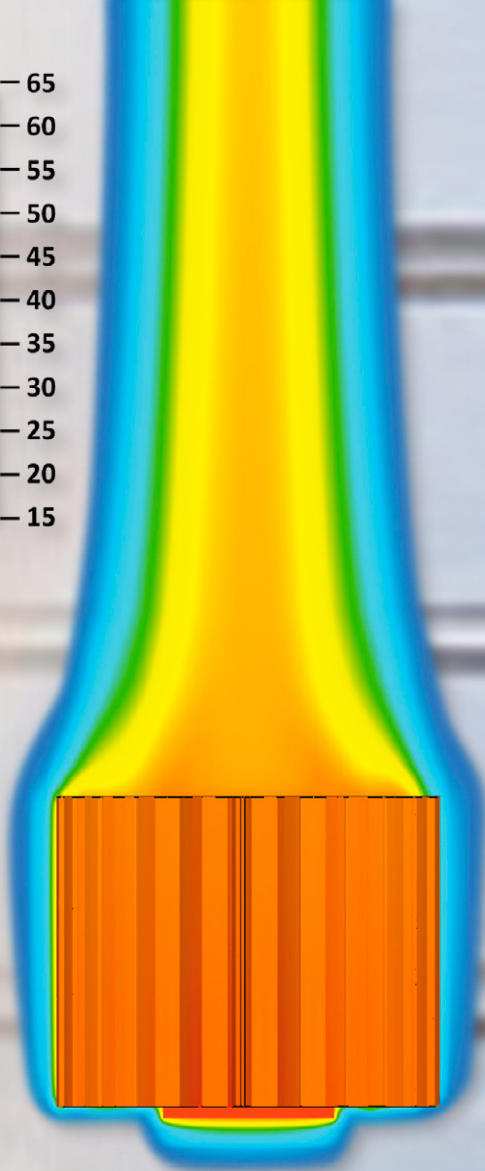
MechaTronix' ground breaking ModuLED coolers and its actively cooled sibling IceLED have garnered a lot of attention and positive reviews in the LED market. ModuLED and IceLED are just precursors of a complete range of dedicated and highly effective LED coolers for professional deployment in spotlights, downlights, high bays and a further score of architectural and utility LED applications.

Both ModuLED and IceLED, as well as their upcoming descendants are Zhaga-ready and have a matrix of mounting holes that allows for very easy attachment of a great number of various Luminus LED arrays. Simply apply a thermal interface of your choice, put the LED engine in place and fasten with self-tapping screws and you are good to go! No drilling, customisation or special mounting brackets are needed.

Thanks to an extremely thorough thermal verification of all heat sink lines, MechaTronix provides total thermal disclosure for each model, coupled with all Luminus XNova LED Arrays and engines. All thermal data is available in the product specifications, that come with every MechaTronix heat sink. In this way, engineers save time and effort during the design stage of their LED fixture and will significantly shorten their time to market.

OUR PROCESS STARTS WITH LISTENING





 Zhaga

ModuLED
IceLED

XICATO LED COOLING

For Xicato XOB Chip on Board LED light source - Off the shelf
Passive and active LED cooling

LPF3550-ZHC



Xicato LED Pin Fin cooler
ø35mm - h50mm - Rth 7.41°C/W
Cooling performance 700 - 1,300 lm

Direct mount	Zhaga holder	Xicato XOB LED
✓	✓	XOB04
✓		XOB06
✓		XOB09

LPF4768-ZHP



Xicato LED Pin Fin cooler
ø47mm - h68mm - Rth 3.9°C/W
Cooling performance 1,300 - 2,500 lm

Direct mount	Zhaga holder	Xicato XOB LED
	✓	XOB04
	✓	XOB06
	✓	XOB09
	✓	XOB14

LPF6050-ZHC



Xicato LED Pin Fin cooler
ø60mm - h50mm - Rth 4.0°C/W
Cooling performance 1,200 - 2,300 lm

Direct mount	Zhaga holder	Xicato XOB LED
✓	✓	XOB04
✓	✓	XOB06
✓	✓	XOB09
	✓	XOB14

LPF6768-ZHP



Xicato LED Pin Fin cooler
ø67mm - h68mm - Rth 2.1°C/W
Cooling performance 2,300 - 4,600 lm

Direct mount	Zhaga holder	Xicato XOB LED
	✓	XOB09
	✓	XOB14
	✓	XOB23

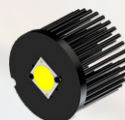
LPF8050-ZHC



Xicato LED Pin Fin cooler
ø80mm - h50mm - Rth 2.34°C/W
Cooling performance 2,000 - 4,000 lm

Direct mount	Zhaga holder	Xicato XOB LED
✓	✓	XOB09
	✓	XOB14
	✓	XOB23

LPF8668-ZHC



Xicato LED Pin Fin cooler
ø86mm - h68mm - Rth 1.46°C/W
Cooling performance 3,300 - 6,500 lm

Direct mount	Zhaga holder	Xicato XOB LED
✓	✓	XOB14
✓	✓	XOB23

LPF11180-ZHE



Xicato LED Pin Fin cooler
ø111mm - h80mm - Rth 1.07°C/W
Cooling performance 4,800 - 9,600 lm

Direct mount	Zhaga holder	Xicato XOB LED
	✓	XOB23

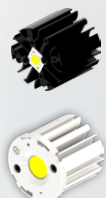
CoolStar® 3445



Xicato Designer LED Star cooler
ø34mm - h45mm - Rth 8.13°C/W
Cooling performance 600 - 1,200 lm

Direct mount	Zhaga holder	Xicato XOB LED
	✓	XOB04
	✓	XOB06

CoolStar® 4740 (XSA-550)



Xicato Designer LED Star cooler
ø47mm - h40mm - Rth 5°C/W
Cooling performance 1,000 - 2,000 lm

Direct mount	Zhaga holder	Xicato XOB LED
✓	✓	XOB04
✓	✓	XOB06
✓	✓	XOB09
	✓	XOB14

CoolStar® 4760 (XSA-551)



Xicato Designer LED Star cooler
ø47mm - h60mm - Rth 4.17°C/W
Cooling performance 1,200 - 2,400 lm

Direct mount	Zhaga holder	Xicato XOB LED
✓	✓	XOB04
✓	✓	XOB06
✓	✓	XOB09
	✓	XOB14

XICATO LED COOLING

For Xicato XOB Chip on Board LED light source - Off the shelf
Passive and active LED cooling



CoolStar® 6730 (XSA-552)

Xicato Designer LED Star cooler
ø67mm - h30mm - Rth 3.13°C/W
Cooling performance 1,600 - 3,100 lm

Direct mount	Zhaga holder	Xicato XOB LED
✓	✓	XOB09
✓	✓	XOB14



CoolStar® 6760 (XSA-553)

Xicato Designer LED Star cooler
ø67mm - h60mm - Rth 2.27°C/W
Cooling performance 2,100 - 4,200 lm

Direct mount	Zhaga holder	Xicato XOB LED
✓	✓	XOB09
✓	✓	XOB14
	✓	XOB23



CoolStar® 8630 (XSA-554)

Xicato Designer LED Star cooler
ø86mm - h30mm - Rth 2.08°C/W
Cooling performance 2,300 - 4,600 lm

Direct mount	Zhaga holder	Xicato XOB LED
✓	✓	XOB09
✓	✓	XOB14
	✓	XOB23



CoolStar® 8660 (XSA-555)

Xicato Designer LED Star cooler
ø86mm - h60mm - Rth 1.56°C/W
Cooling performance 3,100 - 6,100 lm

Direct mount	Zhaga holder	Xicato XOB LED
✓	✓	XOB14
	✓	XOB23



ModuLED Pico 4750

Xicato Modular LED Star cooler
ø47mm - h50mm - Rth 5.3°C/W
Cooling performance 900 - 1,800 lm

Direct mount	Zhaga holder	Xicato XOB LED
✓	✓	XOB04
✓	✓	XOB06
✓	✓	XOB09
✓	✓	XOB14



ModuLED Pico 4780

Xicato Modular LED Star cooler
ø47mm - h80mm - Rth 4.2°C/W
Cooling performance 1,200 - 2,300 lm

Direct mount	Zhaga holder	Xicato XOB LED
✓	✓	XOB04
✓	✓	XOB06
✓	✓	XOB09
✓	✓	XOB14



ModuLED Nano 7050

Xicato Modular LED Star cooler
ø70mm - h50mm - Rth 2.2°C/W
Cooling performance 2,200 - 4,300 lm

Direct mount	Zhaga holder	Xicato XOB LED
✓	✓	XOB09
✓	✓	XOB14
	✓	XOB23



ModuLED Nano 7080

Xicato Modular LED Star cooler
ø70mm - h80mm - Rth 1.8°C/W
Cooling performance 2,700 - 5,300 lm

Direct mount	Zhaga holder	Xicato XOB LED
✓	✓	XOB14
	✓	XOB23



ModuLED Micro 8630

Xicato Modular LED Star cooler
ø86mm - h30mm - Rth 1.8°C/W
Cooling performance 2,700 - 5,300 lm

Direct mount	Zhaga holder	Xicato XOB LED
✓	✓	XOB14
	✓	XOB23



ModuLED Micro 8650

Xicato Modular LED Star cooler
ø86mm - h50mm - Rth 1.5°C/W
Cooling performance 3,200 - 6,400 lm

Direct mount	Zhaga holder	Xicato XOB LED
✓	✓	XOB14
	✓	XOB23

XICATO LED COOLING

For Xicato XOB Chip on Board LED light source - Off the shelf
Passive and active LED cooling



ModuLED Micro 8680

Xicato Modular LED Star cooler
ø86mm - h80mm - Rth 1.2°C/W
Cooling performance 4,000 - 8,000 lm

Direct mount	Zhaga holder	Xicato XOB LED
	<input checked="" type="checkbox"/>	XOB23



ModuLED 9950

Xicato Modular LED Star cooler
ø99mm - h50mm - Rth 1.34°C/W
Cooling performance 3,600 - 7,200 lm

Direct mount	Zhaga holder	Xicato XOB LED
<input checked="" type="checkbox"/> <input checked="" type="checkbox"/> <input checked="" type="checkbox"/>	<input checked="" type="checkbox"/> <input checked="" type="checkbox"/>	XOB14 XOB23 XOB32



ModuLED 9980

Xicato Modular LED Star cooler
ø99mm - h80mm - Rth 1.02°C/W
Cooling performance 4,700 - 9,400 lm

Direct mount	Zhaga holder	Xicato XOB LED
<input checked="" type="checkbox"/> <input checked="" type="checkbox"/>	<input checked="" type="checkbox"/>	XOB23 XOB32



ModuLED Mega 13420

Xicato Modular LED Star cooler
ø134mm - h20mm - Rth 1.32°C/W
Cooling performance 3,700 - 7,300 lm

Direct mount	Zhaga holder	Xicato XOB LED
<input checked="" type="checkbox"/> <input checked="" type="checkbox"/> <input checked="" type="checkbox"/>	<input checked="" type="checkbox"/> <input checked="" type="checkbox"/> <input checked="" type="checkbox"/>	XOB14 XOB23 XOB32



ModuLED Mega 13450-HBG

Xicato High Bay LED cooler with driver connection system
ø134mm - h50mm - Rth 0.88°C/W
Cooling performance 5,500 - 11,000 lm

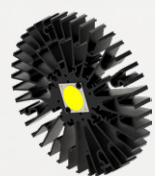
Direct mount	Zhaga holder	Xicato XOB LED
<input checked="" type="checkbox"/> <input checked="" type="checkbox"/>	<input checked="" type="checkbox"/> <input checked="" type="checkbox"/>	XOB23 XOB32



ModuLED Mega 134100-HBG

Xicato High Bay LED cooler with driver connection system
ø134mm - h100mm - Rth 0.67°C/W
Cooling performance 7,200 - 14,300 lm

Direct mount	LED holder	Xicato XOB LED
<input checked="" type="checkbox"/>	<input checked="" type="checkbox"/>	XOB32



ModuLED Giga 15220

Xicato Modular LED Star cooler
ø152mm - h20mm - Rth 1.13°C/W
Cooling performance 4,300 - 8,500 lm

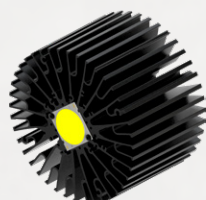
Direct mount	Zhaga holder	Xicato XOB LED
<input checked="" type="checkbox"/> <input checked="" type="checkbox"/>	<input checked="" type="checkbox"/> <input checked="" type="checkbox"/>	XOB23 XOB32



ModuLED Giga 15250

Xicato Modular LED Star cooler
ø152mm - h50mm - Rth 0.7°C/W
Cooling performance 6,800 - 13,500 lm

Direct mount	Zhaga holder	Xicato XOB LED
<input checked="" type="checkbox"/> <input checked="" type="checkbox"/>	<input checked="" type="checkbox"/> <input checked="" type="checkbox"/>	XOB23 XOB32



ModuLED Giga 152100-HBG

Xicato High Bay LED cooler with direct mounting holes for Mean Well HBG series driver
ø152mm - h100mm - Rth 0.52°C/W
Cooling performance 9,000 - 18,000 lm

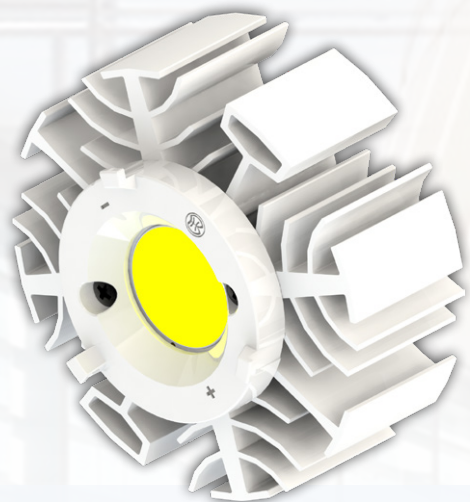
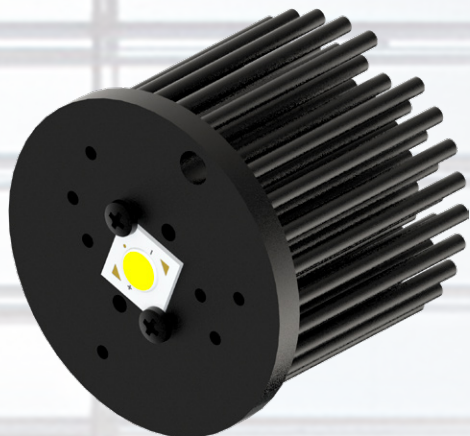
Direct mount	LED holder	Xicato XOB LED
<input checked="" type="checkbox"/>	<input checked="" type="checkbox"/>	XOB32



IceLED 450

Xicato Modular Active LED cooler
ø99mm - h45mm - Rth 0.58°C/W
Cooling performance 3,500 - 10,500 lm

Direct mount	Zhaga holder	Xicato XOB LED
<input checked="" type="checkbox"/>		XOB32



Your local distributor:

OUR PROCESS STARTS WITH LISTENING 



No.818, Dashun 2nd Rd., Sanmin Dist.
Tel: +886-7-3815892
led@mechatronix-asia.com

Kaohsiung City 80787 Taiwan
Fax: +886-7-3839293
www.led-heatsink.com