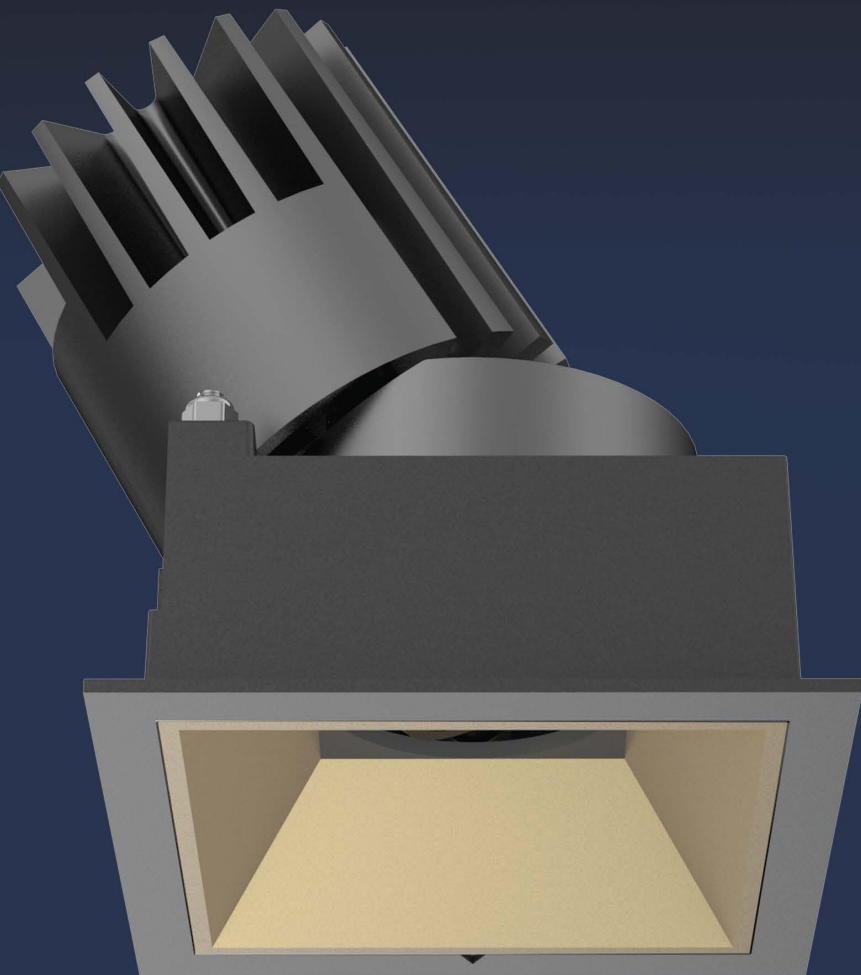
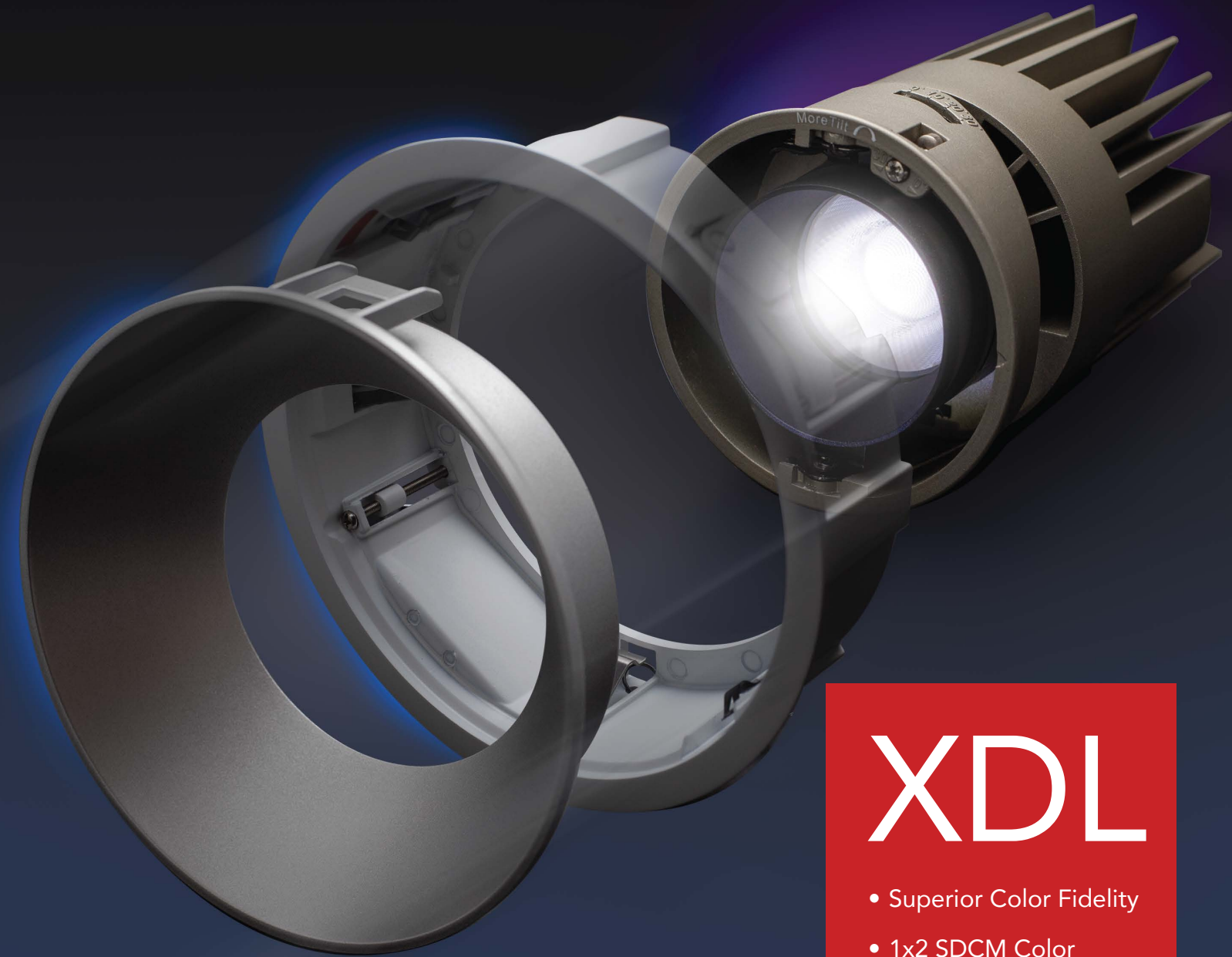
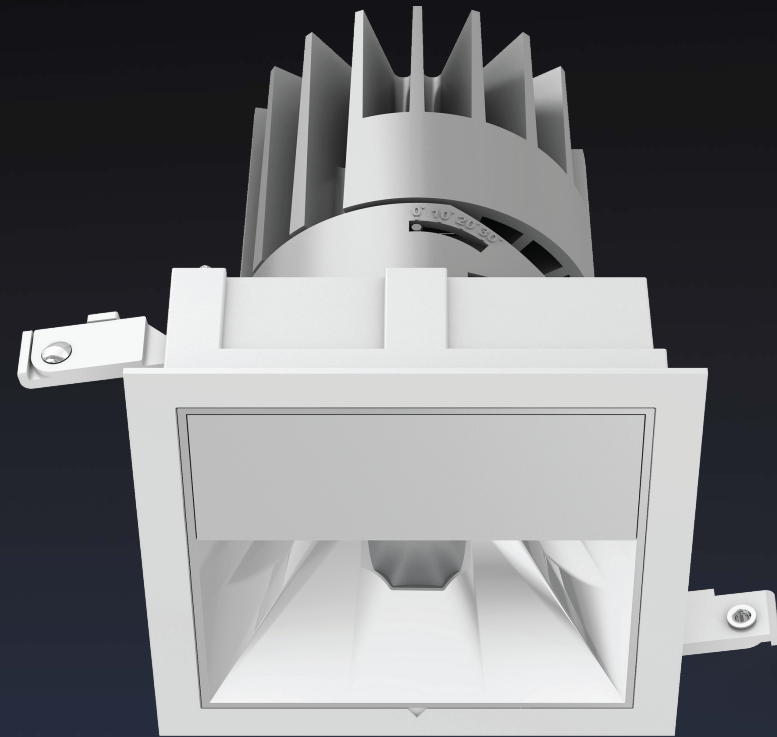


Xicato®

Transform Your Space



xicato®

Xicato Global Headquarters
102 Cooper Court Los Gatos, CA 95032
Contact Us Tel: +1 866 223 8395
info@xicato.com | xicato.com

* LIMITED PRODUCT WARRANTY - With respect to each Product, Xicato warrants that such Products will be free of defects in material and workmanship for a period defined for each Product from the date of the original purchase by the Customer; and the specific limited warranty conditions for each Product are as follows: XIM with Bluetooth (XIM Gen4) LED Modules. All XIM part numbers that end in ASA and ASA, e.g. XIM19953020ASA, XIM0990271346A, 7 years or 50,000 hours, B0, on lumen maintenance, color maintenance, and electronics if purchased before July 2020. 10 years B0, on lumen maintenance, color maintenance, and electronics if purchased on or after July 1, 2020. XIM (non-Bluetooth enabled), XCA, and XTM LED Modules All part numbers beginning with XCA and XTM, as well as all parts beginning with XIM that end in A2A or A3A, e.g. XIM092707A2A, XIM19804050ASA, 7 years, B0, on lumen maintenance, color maintenance, and electronics if purchased before July 2020. 10 years B0, on lumen maintenance, color maintenance, and electronics if purchased on or after July 1, 2020. XFL Flexible Linear Tape All part numbers beginning with XFL 10 years, B0, on lumen maintenance XOB LED Arrays. All part numbers beginning with XOB. 5 years, B0 on lumen maintenance, when driven at or below maximum operating conditions, 2 years, B0 on color maintenance, when driven at or below nominal operating conditions. XID Drivers: All part numbers start with XID. 5 years or 50,000 hours, B0, on electronics



LIMITED PRODUCT WARRANTY *

Architectural Downlights

XDL

- Superior Color Fidelity
- 1x2 SDCM Color Consistency
- Zero Color-Shift
- True Flicker-Free
- Xmesh Wireless
- Low Maintenance
- Up to 10 Year Warranty



XDL

XDL Downlight from Xicato brings together superior LED light, driver, and controls in terms of quality, longevity, and intelligence in an elegant yet flexible package that enables designers to individualize and optimize each space for every application.

Select Xmesh option to enable every XDL fixture to act as a network node within the Xicato smart building ecosystem which unleashes greater capabilities including wireless control, data analytics, remote access, and asset tracking.

Innovation

XDL is the brainchild of Xicato's renowned engineering and innovation. Integrating Xicato's world class LED light source and its high performance driver into an innovative downlight design is simply the birth of a world class lighting fixture. Backed by industry leading warranty, Xicato stands behind its innovation to provide piece of mind while reducing overall TCO.

Difference

- Best-in-class warranty (up to 10 yrs)
- World-class color fidelity
- Best color consistency (1x2 SDCM)
- ZERO color shift with Xicato XTM
- ZERO flicker, visible and invisible
- 0-10V and DALI-2 dimming
- Wireless capable with Xmesh option
- Remote access and asset tracking
- Xicato's smart building ecosystem

Applications

- Commercial Offices and Buildings
- Museums, Heritage, Galleries
- Retail Shops and Malls
- Hotels and Hospitality
- Healthcare Facilities, Hospitals
- Schools and Educational Facilities
- Mixed Use and High End Residential

Aperture Size

Shape

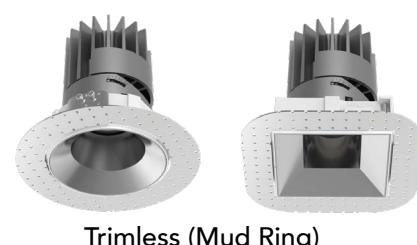
Application

Mounting Style

Lighting

Reflector Finish

Dimming Control



3": Up to 1180Lm
4": Up to 2030Lm
6": Up to 3100Lm



6": Up to 2250Lm

CRI
>90
>95
>95
Vibrant



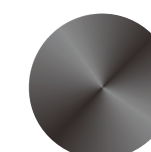
CCT:
2700K, 3000K
3500K, 4000K



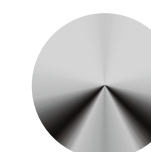
3": 24°, 30°, 40°, 50°
4": 20°, 25°, 36°, 50°
6": 20°, 30°, 50°
6" XTM: 25°, 36°, 50°



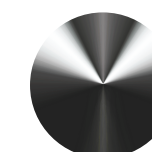
Matte White



Matte Black



Matte Silver



Chrome Black



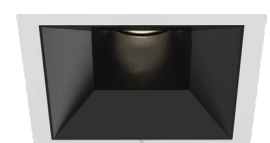
Chrome Silver



0-10V
Dimmable



*Available in 4" and 6" only.



Wall Wash*



Trimmed (White or Black)